

Long-Term Perspective

April 16, 2018

Top-Ten Portfolio

We have created a high-quality portfolio of stocks with a focus on growth and attractive yields.

NOTE: *The Top-Ten Portfolio has a long-term perspective. As such, we will update it once a week, using Friday's closing prices. Also, it will be essentially a Buy-and-Hold portfolio, with minimal trading involved. The portfolio will always be fully invested.*

The initial investment will be a total of \$500,000. To begin with, each of the ten stocks has an equal weighting, meaning the dollar amount of each holding will be approximately \$50,000. If a stock is sold, the replacement stock will begin with the amount of the closing proceeds of the stock sold.

We will conduct a portfolio assessment on a regular basis to determine whether changes should be made.

THIS WEEK'S COMMENT: *We rounded back up to ten stocks with the purchase last Thursday of Enercare Inc. Nice purchase dividend yield of 5.8%. Although the portfolio is considerably under water at the present, it does not take much for any one stock to return to positive territory. While the U.S. stock indexes recently have exhibited considerable volatility, lately the S&P/TSX Composite and 60 have shown anything but.*

The current portfolio is presented below.

TOP TEN	Share Price Information			As at: 16-Apr-18			Inception: 02-Jan-18			
	Company	Symbol	Current Price	First Target	Second Target	Third Target	% Inc. to 1st Target	% Inc. to 2nd Target	% Inc. to 3rd Target	
1	Algonquin Power & Utilities Corp.	AQN	\$14.03	\$12.33	\$14.07	\$14.27	\$14.47	14.1%	15.7%	17.4%
2	ARC Resources Ltd.	ARX	\$14.96	\$13.93	\$15.60	\$16.40	\$17.20	12.0%	17.7%	23.5%
3	Bank of Montreal	BMO	\$100.59	\$95.17	\$103.13	\$104.70	\$106.25	8.4%	10.0%	11.6%
4	Enbridge Inc.	ENB	\$43.50	\$41.00	\$45.30	\$46.88	\$48.45	10.5%	14.3%	18.2%
5	Enercare Inc.	ECI	\$17.21	\$17.65	\$18.00	\$18.75	\$19.50	2.0%	6.2%	10.5%
6	Goldcorp Inc.	G	\$16.24	\$18.05	\$18.75	\$19.15	\$19.50	3.9%	6.1%	8.0%
7	Keyera Corp.	KEY	\$35.37	\$35.17	\$37.50	\$39.00	\$40.50	6.6%	10.9%	15.2%
8	Manulife Financial Corporation	MFC	\$26.19	\$23.46	\$27.35	\$28.13	\$28.90	16.6%	19.9%	23.2%
9	Saputo Inc.	SAP	\$41.35	\$41.20	\$42.20	\$43.00	\$43.75	2.4%	4.4%	6.2%
10	Shawcor Ltd.	SCL	\$27.43	\$25.00	\$28.90	\$29.70	\$30.50	15.6%	18.8%	22.0%

NB: **Green** negative percentage numbers denote a stock price that has exceeded the Price Target.

NB: The Analyst, either **directly** or **indirectly**, currently owns shares in **ARC Resources Ltd.**, **Keyera Corporation**, and **Shawcor Ltd.**

The performance of these stocks is provided in the table on the next page.

<continued>

TOP TEN
Portfolio Performance
As at: 16-Apr-18
Initiation: 02-Jan-18

<u>Company</u>	<u>Symbol</u>	<u>Purchase Date</u>	<u>Number of Shares</u>	<u>Purchase Price</u>	<u>Current Price</u>	<u>Purchase Cost</u>	<u>Current Value</u>	<u>\$ Gain or (Loss)</u>	<u>% Gain or (Loss)</u>
1 Algonquin Power & Utilities Corp.	AQN	02-Jan-18	3564	\$14.03	\$12.33	\$50,000	\$43,942	-\$6,058	-12.1%
2 ARC Resources Ltd.	ARX	02-Jan-18	3342	\$14.96	\$13.93	\$49,996	\$46,554	-\$3,442	-6.9%
3 Bank of Montreal	BMO	02-Jan-18	497	\$100.59	\$95.17	\$49,993	\$47,299	-\$2,694	-5.4%
4 Enbridge Inc.	ENB	09-Feb-18	1149	\$43.50	\$41.00	\$49,982	\$47,109	-\$2,873	-5.7%
5 Enecare Inc.	ECI	12-Apr-18	2,905	\$17.21	\$17.65	\$49,995	\$51,273	\$1,278	2.6%
6 Goldcorp Inc.	G	02-Jan-18	3079	\$16.24	\$18.05	\$50,003	\$55,576	\$5,573	11.1%
7 Keyera Corp.	KEY	02-Jan-18	1,414	\$35.37	\$35.17	\$50,013	\$49,730	-\$283	-0.6%
8 Manulife Financial Corporation	MFC	02-Jan-18	1,909	\$26.19	\$23.46	\$49,997	\$44,785	-\$5,212	-10.4%
9 Saputo Inc.	SAP	15-Mar-18	1,209	\$41.35	\$41.20	\$49,992	\$49,811	-\$181	-0.4%
10 Shawcor Ltd.	SCL	02-Jan-18	1,823	\$27.43	\$25.00	<u>\$50,005</u>	<u>\$45,575</u>	<u>-\$4,430</u>	<u>-8.9%</u>
Stock Totals						\$499,976	\$481,655	-\$18,321	-3.7%
						Stock Annualized Return:		-12.6%	
Cash						\$24	\$24		
Cumulative Dividend Payments							\$4,346		
Net Trading Profits							\$29,646		
Portfolio Totals						\$500,000	\$515,670	3.1%	
						Portfolio Annualized Return:		10.8%	
S&P/TSX COMPOSITE INDEX						16,209.13	15,300.38	-908.75	-5.6%
						S&P/TSX Comp. Annualized Return:		-19.3%	
S&P/TSX 60 INDEX						959.70	901.87	-57.83	-6.0%
						S&P/TSX 60 Annualized Return:		-20.8%	

Here is a list of the stocks sold to date, since inception on January 2, 2018:

Stocks Sold

<u>Company</u>	<u>Purchase Date</u>	<u>Selling Date</u>	<u>Purchase Price</u>	<u>Selling Price</u>	<u>Purchase Cost</u>	<u>Selling Value</u>	<u>\$ Gain or (Loss)</u>	<u>% Gain or (Loss)</u>	<u>Number of Shares</u>	<u>Cum. Gain or (Loss)</u>
Thomson Reuters Corporation	02-Jan-18	30-Jan-18	\$54.80	\$59.05	\$49,978	\$53,851	\$3,874	7.8%	912	\$3,874
Shopify Inc.	02-Jan-18	30-Jan-18	\$127.32	\$159.99	\$50,037	\$62,876	\$12,839	25.7%	393	\$16,713
Shopify Inc.	02-Feb-18	15-Feb-18	\$143.79	\$168.51	\$56,509	\$66,224	\$9,715	17.2%	393	\$26,428
Parkland Fuel Corporation	02-Jan-18	09-Apr-18	\$26.89	\$28.62	\$50,015	\$53,233	\$3,218	6.4%	1860	\$29,646

<continued>

Below, we provide a table that indicates the annual dividend, the corresponding annual income and equity yields, and the dividend pay-outs to date since inception. This table is updated at the end of each month. These totals are as at March 29, 2018:

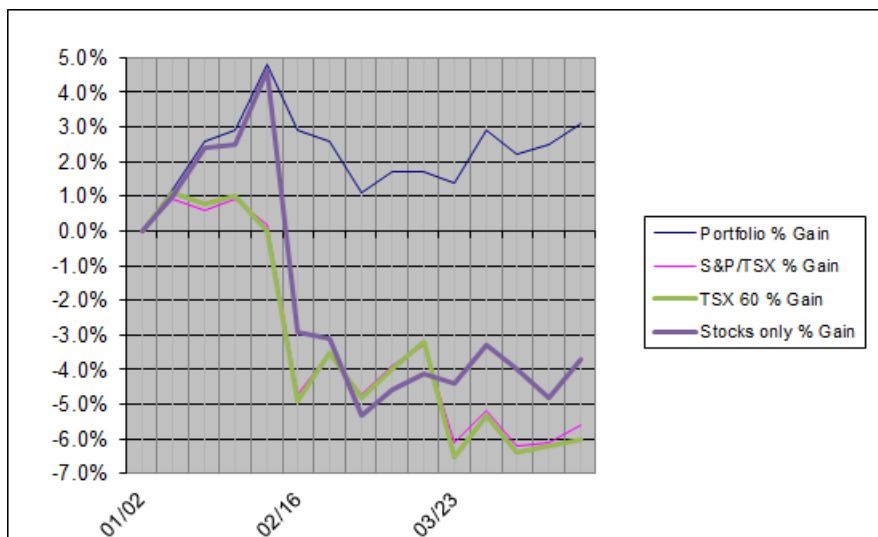
TOP TEN		Annual Income/Yield						As at: 29-Mar-18			
<u>Company</u>	<u>Purchase Price</u>	<u>Current Price</u>	<u>Annual Dividend</u>	<u>Annual Income</u>	<u>Purchase Yield</u>	<u>Current Yield</u>	<u>Fr</u>	<u>Months</u>	<u>Period Payout</u>	<u>Pay-Out To Date</u>	
1 Algonquin Power & Utilities Corp.	\$14.03	\$12.77	\$0.60	\$2,150	4.3%	4.7%	Q	M/J/S/D	\$538	\$538	
2 ARC Resources Ltd.	\$14.96	\$14.04	\$0.60	\$2,005	4.0%	4.3%	M	28th	\$167	\$501	
3 Bank of Montreal	\$100.59	\$97.32	\$3.72	\$1,849	3.7%	3.8%	Q	J/A/J/O	\$462	\$462	
4 Enbridge Inc.	\$43.50	\$40.52	\$2.68	\$3,084	6.2%	6.6%	Q	F/M/A/N	\$771	\$771	
5 Goldcorp Inc.	\$16.24	\$17.79	\$0.10	\$318	0.6%	0.6%	Q	M/J/S/D	\$79	\$79	
6 Keyera Corp.	\$35.37	\$33.51	\$1.68	\$2,376	4.7%	5.0%	M	22nd	\$198	\$594	
7 Manulife Financial Corporation	\$26.19	\$23.92	\$0.82	\$1,565	3.1%	3.4%	Q	F/M/A/N	\$391	\$391	
8 Parkland Fuel Corporation	\$26.89	\$28.99	\$0.38	\$714	1.4%	1.3%	M	20th	\$179	\$536	
9 Saputo Inc.	\$41.35	\$41.35	\$0.64	\$774	1.5%	1.5%	Q	M/J/S/D	\$193	\$193	
10 Shawcor Ltd.	\$27.43	\$24.40	\$0.60	<u>\$1,094</u>	<u>2.2%</u>	<u>2.5%</u>	Q	M/M/A/N	<u>\$273</u>	<u>\$273</u>	
Portfolio Totals				\$15,928	3.2%	3.3%					
Dividends, Companies Sold								\$0			
Total Dividends Received								<u>\$4,339</u>			

Comparison

For comparative purposes, the following graph depicts the performance, since initiation, of the eResearch portfolio (**LIGHT BLUE** line) and the stock portion only (heavy **DARK BLUE** line) against the S&P/TSX Composite Index (**PINK** line) and the S&P/TSX 60 (**GREEN** line).

The portfolio is performing much better than either of the market indexes, (trading profits):

Portfolio performance = +3.1%
 Stock portion only = -3.7%
 S&P/TSX Composite = -5.6%
 S&P/TSX 60 = -6.0%





DISCLAIMER

eResearch Corporation

eResearch was established in 2000 as Canada's first equity issuer-sponsored research organization. As a primary source for professional investment research, our Subscribers (*subscription is free!!!*) benefit by having written research on a variety of small- and mid-cap, under-covered companies. We also provide unsponsored research reports on middle and larger-sized companies, using a combination of fundamental and technical analysis. We complement our corporate research coverage with a diversified selection of informative, insightful, and thought-provoking research publications from a wide variety of investment professionals. We provide our professional investment research and analysis directly to our extensive subscriber network of discerning investors, and electronically through our website: www.eResearch.ca.

eResearch Disclosure Statement

eResearch is engaged solely in the provision of equity research to the investment community. eResearch provides published research and analysis to its Subscribers on its website (www.eresearch.ca), and to the general investing public through its extensive electronic distribution network and through newswire agencies.

With regards to distribution of its research material, eResearch makes all reasonable efforts to provide its publications, via e-mail, simultaneously to all of its Subscribers.

eResearch does not manage money or trade with the general public, provides full disclosure of all fee arrangements, and adheres to the strict application of its Best Practices Guidelines.