

Top-Ten Portfolio

We have created a portfolio of stocks with a focus on growth and attractive yields.

NOTE: *The Top-Ten Portfolio has a long-term perspective. As such, we will update it once a week, using Friday's closing prices. Also, it will be essentially a Buy-and-Hold portfolio, with minimal trading involved. The portfolio will always be fully invested, if appropriate.*

The initial investment will be a total of \$500,000. To begin with, each of the ten stocks has an equal weighting, meaning the dollar amount of each holding will be approximately \$50,000. If a stock is sold, the replacement stock will begin with an amount close to \$50,000.

We will conduct a portfolio assessment on a regular basis to determine whether changes should be made. We also utilize "trigger" sell prices as a systematic discipline.

THIS WEEK'S COMMENT: *The Portfolio slipped 0.9% this past week, while the S&P/TSX Composite Index gained slightly. Fairfax Financial Holdings rebounded back into the **Green**, but Baytex Energy remained in the **Red** and was joined by Sprott Physical Gold & Silver Trust, which had got off to such a good start immediately after it joined the Portfolio. Since inception, including dividends and net trading profits, the Portfolio is up 15.3% compared to the S&P/TSX Composite Index (including reinvested dividends) of 17.6%. I added NFI Group to the Portfolio on Tuesday and it is ahead by 2.0%. I continue to remain somewhat nervous short-term, just because there has been such a rapid gain since Boxing Day. The price of crude oil (WTI) is back above \$60/barrel, so I am hoping there will be a lift coming for our oil stocks.*

The portfolio is presented below.

TOP TEN	Share Price Information		As at: 29-Mar-19		Inception: 01-Jan-19 (Dec 31/18 closing prices)			
	Company	Symbol	Purchase Price	Current Price	First Target	Second Target	First Sell (First 50%)	Second Sell (Second 50%)
1	AltaGas Ltd.	ALA	\$13.90	\$17.59	\$15.63	\$18.75	\$13.34	\$12.79
2	Baytex Energy Corp.	BTE	\$2.41	\$2.27	\$2.75	\$3.13	\$2.29	\$2.17
3	Fairfax Financial Holdings Ltd.	FFH	\$600.98	\$619.00	\$625.00	\$687.50	\$582.95	\$558.91
4	NFI Group Inc.	NFI	\$32.11	\$32.75	\$34.38	\$37.50	\$30.83	\$29.54
5	Parex Resources Inc.	PXT	\$17.66	\$20.92	\$20.30	\$21.90	\$16.95	\$16.25
6	Sprott Physical Gold & Silver Trust	CEF	\$16.99	\$16.66	\$17.20	\$17.60	\$16.31	\$15.63
7	Vermilion Energy Inc.	VET	\$28.76	\$32.99	\$31.25	\$34.38	\$27.61	\$26.46
8	Whitecap Resources Inc.	WCP	\$4.35	\$4.61	\$5.50	\$6.25	\$4.13	\$3.92

NB: Sell Price for stocks under \$10 is -5% and -10%; between \$10 and \$50, it is -4% and -8%; over \$50, it is -3% and -7%.

NB: If a stock reaches its First Sell but not its Second Sell, the holding is repurchased if it recovers to the original Purchase Price.

NB: **Red** numbers denote the stock price is below the Sell Price; **Green** numbers denote the stock price exceeds the Price Target.

NB: The Analyst, either **directly** or **indirectly**, currently owns shares in **AltaGas**, **NFI**, and **Vermilion Energy**.

The performance of these stocks is provided in the table on the next page.

TOP TEN
Portfolio Performance
As at: 29-Mar-19
Initiation: 01-Jan-19

<u>Company</u>	<u>Symbol</u>	<u>Purchase Date</u>	<u>Number of Shares</u>	<u>Purchase Price</u>	<u>Current Price</u>	<u>Purchase Cost</u>	<u>Current Value</u>	<u>\$ Gain or (Loss)</u>	<u>% Gain or (Loss)</u>
1 AltaGas Ltd.	ALA	02-Jan-19	3,597	\$13.90	\$17.59	\$49,998	\$63,271	\$13,273	26.5%
2 Baytex Energy Corp.	BTE	02-Jan-19	20,747	\$2.41	\$2.27	\$50,000	\$47,096	-\$2,905	-5.8%
3 Fairfax Financial Holdings Ltd.	FFH	02-Jan-19	83	\$600.98	\$619.00	\$49,944	\$51,442	\$1,498	3.0%
4 NFI Group Inc.	NFI	26-Mar-19	1,557	\$32.11	\$32.75	\$49,995	\$50,992	\$996	2.0%
5 Parex Resources Inc.	PXT	09-Jan-19	2,063	\$17.66	\$20.92	\$36,424	\$43,148	\$6,724	18.5%
6 Sprott Physical Gold & Silver Trust	CEF	11-Mar-19	2,943	\$16.99	\$16.66	\$50,002	\$49,030	-\$971	-1.9%
7 Vermilion Energy Inc.	VET	02-Jan-19	1,738	\$28.76	\$32.99	\$49,985	\$57,337	\$7,352	14.7%
8 Whitecap Resources Inc.	WCP	02-Jan-19	11,494	\$4.35	\$4.61	\$49,999	\$52,987	\$2,988	6.0%
Stock Totals						\$386,347	\$415,303	\$28,955	7.5%
						Stock Annualized Return:		30.8%	
Cash						\$135,512	\$135,512		
Cumulative Dividend Payments								\$3,725	
Net Trading Profits								\$21,859	
Net Trading Losses								\$0	
Portfolio Totals						\$500,000	\$576,399	\$76,398	15.3%
						Portfolio Annualized Return:		62.8%	
Portfolio Totals (ex Trading Profits)						\$500,000	\$554,540	\$54,539	10.9%
								44.9%	
S&P/TSX COMPOSITE INDEX						14,322.86	16,102.09	1,779.23	12.4%
						S&P/TSX Comp. Return + Divs		17.6%	
						Annualized Return, incl. Divs		72.5%	

Stocks Sold

<u>Company</u>	<u>Purchase Date</u>	<u>Selling Date</u>	<u>Purchase Price</u>	<u>Selling Price</u>	<u>Purchase Cost</u>	<u>Selling Value</u>	<u>\$ Gain or (Loss)</u>	<u>% Gain or (Loss)</u>	<u>Number of Shares</u>	<u>Cum. Gain or (Loss)</u>
Maxar Technologies Ltd.	02-Jan-19	07-Jan-19	\$16.31	\$14.11	\$25,003	\$21,631	-\$3,373	-13.5%	1,533	-\$3,373
Maxar Technologies Ltd.	02-Jan-19	08-Jan-19	\$16.31	\$9.65	\$25,003	\$14,793	-\$10,210	-40.8%	1,533	-\$13,582
Goldcorp Inc.	02-Jan-19	14-Jan-19	\$13.37	\$13.87	\$50,004	\$51,874	\$1,870	3.7%	3,740	-\$11,712
Shopify Inc.	02-Jan-19	05-Feb-19	\$188.79	\$229.42	\$12,271	\$14,912	\$2,641	21.5%	65	-\$9,071
Shopify Inc.	02-Jan-19	19-Feb-19	\$188.79	\$242.20	\$18,879	\$24,220	\$5,341	28.3%	100	-\$3,730
Toromont Industries Ltd.	02-Jan-19	19-Feb-19	\$54.26	\$69.20	\$50,028	\$63,802	\$13,775	27.5%	922	\$10,044
Shopify Inc.	02-Jan-19	05-Mar-19	\$188.79	\$252.20	\$18,879	\$25,220	\$6,341	33.6%	100	\$16,385
Parkland Fuel Corporation	02-Jan-19	07-Mar-19	\$35.34	\$37.89	\$50,006	\$53,614	\$3,608	7.2%	1,415	\$19,994
Surge Energy Inc.	25-Jan-19	07-Mar-19	\$1.34	\$1.39	\$50,001	\$51,866	\$1,866	3.7%	37,314	\$21,859

<continued>

Below, we provide a table that indicates the annual dividend, the corresponding annual income and equity yields, and the dividend pay-outs to date since inception. This table is updated every two weeks, unless there is a change in the portfolio. These totals are as at March 29, 2019:

TOP TEN

Annual Income/Yield

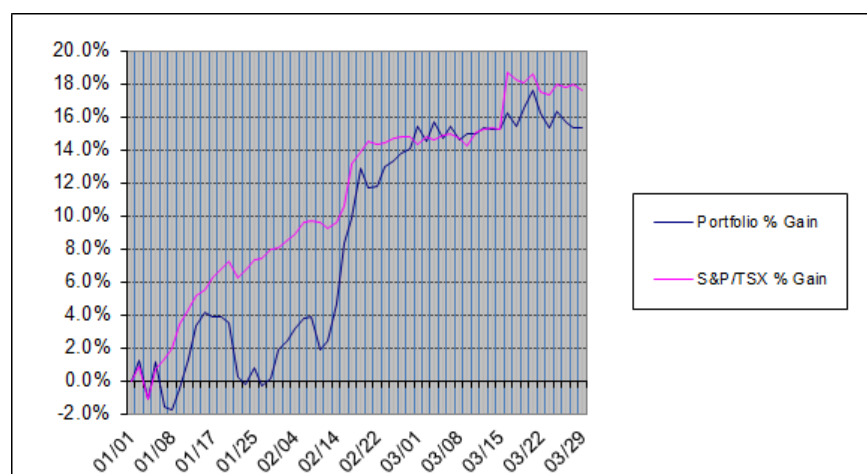
As at: 29-Mar-19

Company	Purchase	Current	Annual	Annual	Purchase	Current	Payment	Dividend	Period	Pay-Out
	Price	Price	Dividend	Income	Yield	Yield	Fr	Months	Payout	To Date
1 AltaGas Ltd.	\$13.90	\$17.59	\$0.96	\$3,453	6.9%	5.5%	M	15th	\$0.08	\$288
2 Baytex Energy Corp.	\$2.41	\$2.27	\$0.00	\$0	0.0%	0.0%	--	---	\$0.00	\$0
3 Fairfax Financial Holdings Ltd.	\$600.98	\$619.00	\$10.00	\$831	1.7%	1.6%	A	Jan	\$10.00	\$831
4 NFI Group Inc.	\$32.11	\$32.75	\$1.70	\$2,647	5.3%	5.2%	Q	MJSD	\$0.425	\$662
5 Parex Resources Inc.	\$17.66	\$20.92	\$0.00	\$0	0.0%	0.0%	--	---	\$0.00	\$0
6 Sprott Physical Gold & Silver Trust	\$16.99	\$16.66	\$0.05	\$157	0.3%	0.3%	A	Oct	\$0.01	\$39
7 Vermilion Energy Inc.	\$28.76	\$32.99	\$2.76	\$4,797	9.6%	8.4%	M	15th	\$0.23	\$400
8 Whitecap Resources Inc.	\$4.35	\$4.61	\$0.32	<u>\$3,724</u>	<u>7.4%</u>	<u>7.0%</u>	M	15th	\$0.03	\$310
Portfolio Totals				\$15,609	3.1%	2.7%				\$2,827
Dividends, Companies Sold										\$898
Total Dividends Received										\$3,725
				Dividend Yield (annualized)	3.9%					

Comparison

For comparative purposes, the following graph depicts the performance, since initiation, of the eResearch portfolio (BLUE line) against the S&P/TSX Composite Index (PINK line). Both indexes include reinvested dividends, and the portfolio includes trading profits/losses.

The portfolio is performing slightly under that of the broad market index:
 Portfolio performance = +15.3% (includes dividends and trading profits)
 S&P/TSX Composite = +17.6% (includes dividends)



####

Contributing Analyst/Portfolio Manager: Bob Weir, CFA



DISCLAIMER

eResearch Corporation

eResearch was established in 2000 as Canada's first equity issuer-sponsored research organization. As a primary source for professional investment research, our Subscribers (*subscription is free!!!*) benefit by having written research on a variety of small- and mid-cap, under-covered companies. We also provide unsponsored research reports on middle and larger-sized companies, using a combination of fundamental and technical analysis. We complement our corporate research coverage with a diversified selection of informative, insightful, and thought-provoking research publications from a wide variety of investment professionals. We provide our professional investment research and analysis directly to our extensive subscriber network of discerning investors, and electronically through our website: www.eResearch.ca.

eResearch Disclosure Statement

eResearch is engaged solely in the provision of equity research to the investment community. eResearch provides published research and analysis to its Subscribers on its website (www.eresearch.ca), and to the general investing public through its extensive electronic distribution network and through newswire agencies.

With regards to distribution of its research material, eResearch makes all reasonable efforts to provide its publications, via e-mail, simultaneously to all of its Subscribers.

eResearch does not manage money or trade with the general public, provides full disclosure of all fee arrangements, and adheres to the strict application of its Best Practices Guidelines.